

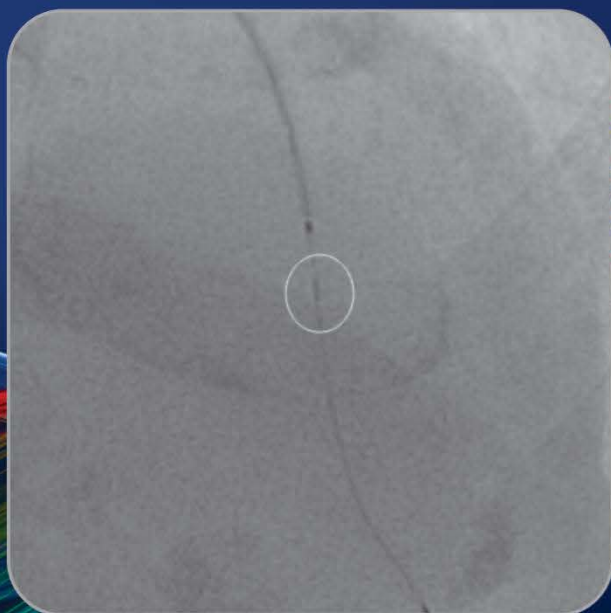
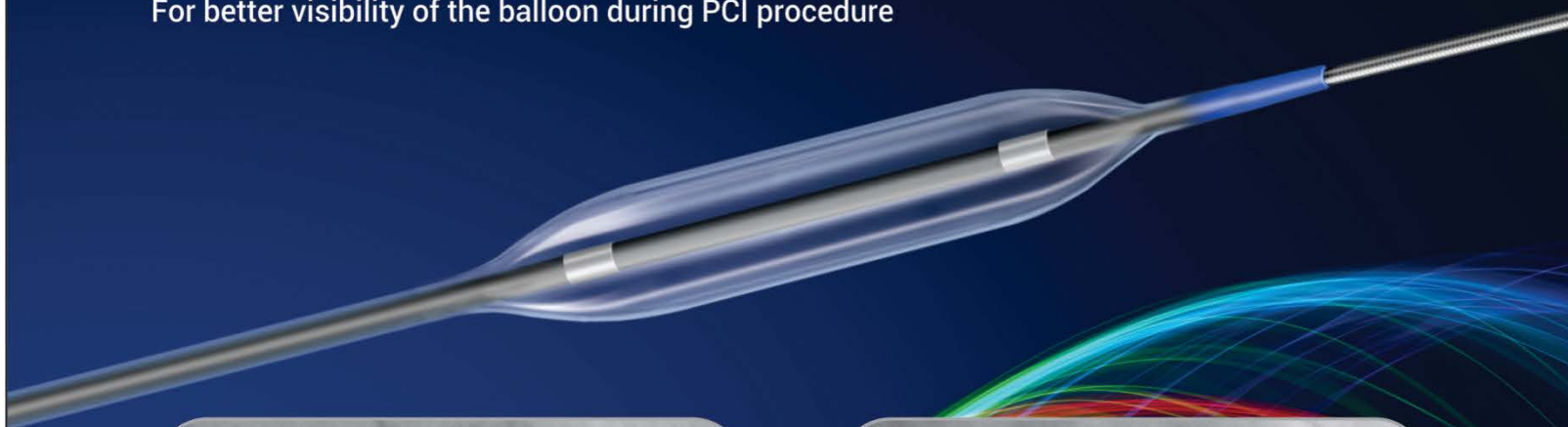
WilmaTM SC

PTCA DILATATION CATHETER

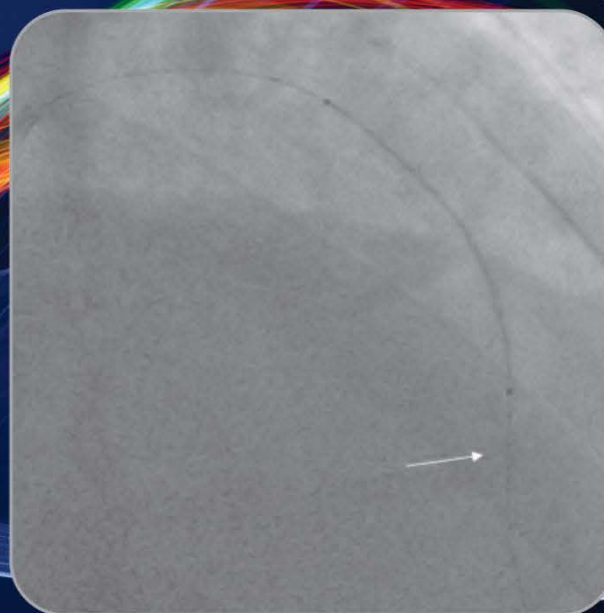
CE
0434

Tapered Radio-opaque Tip

For better visibility of the balloon during PCI procedure



Wilma SC



Brand A

Uniquely tapered Soft tip

- Ultra low profile for softer penetration
- Optimum Crossability
- Minimum vessel wall trauma

Intelligent engineering

**Excellent
deflation time***
Average less
than 8 seconds

*Data on file

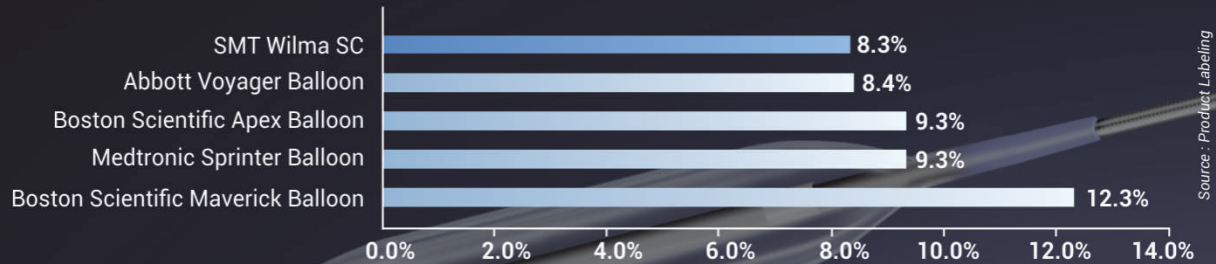
Enhanced Pushability & Trackability

- Highly flexible distal shaft
- PTFE Coated Proximal Shaft

Kink Resistant Shaft



Growth Between Nominal and Rated Burst Pressure (3.0 mm Balloon)



Technical Specifications

Guiding Catheter Compatibility: 5F

Balloon Material	Nylon 12
Balloon Fold	3-fold memory
Balloon diameter	2mm-4.5mm
Balloon length	9mm-41mm
Tip entry profile	0.016" (0.41mm)
Excellent deflation time	Average less than 8 seconds
Shaft diameter	Proximal 1.95F, Distal 2.67F
Catheter length	140cm
Rapid exchange length	25cm
Markers on the proximal shaft	90cm and 100cm
Maximum recommended guidewire	0.014" (0.36mm)
Guidecatheter compatibility	5F Compatible

Compliance Chart

Pressure [atm]	2.00 mm	2.25 mm	2.50 mm	2.75 mm	3.00 mm	3.50 mm	4.00 mm	4.50 mm
6	2.00	2.25	2.50	2.75	3.00	3.50	3.97	4.50
8	2.04	2.31	2.54	2.83	3.09	3.59	4.07	4.59
10	2.08	2.35	2.57	2.86	3.14	3.67	4.15	4.68
12	2.13	2.39	2.60	2.89	3.18	3.70	4.21	4.76
14	2.17	2.43	2.62	2.91	3.21	3.74	4.27	4.85
16	2.21	2.48	2.64	2.94	3.25	3.78	4.32	4.93
18	2.25	2.52	2.67	2.97	3.28	3.82	4.38	4.99

■ Nominal Pressure ■ Rated Burst Pressure 1atm= 1.01bar

Size Matrix

Balloon Diameter	Balloon Length (mm)								
	9	13	15	17	20	25	29	37	41
2.00 mm	✓	✓	✓	✓	✓	✓	✓	✓	✓
2.25 mm	✓	✓	✓	✓	✓	✓	✓	✓	✓
2.50 mm	✓	✓	✓	✓	✓	✓	✓	✓	✓
2.75 mm	✓	✓	✓	✓	✓	✓	✓	✓	✓
3.00 mm	✓	✓	✓	✓	✓	✓	✓	✓	✓
3.50 mm	✓	✓	✓	✓	✓	✓	✓	✓	✓
4.00 mm	✓	✓	✓	✓	✓	✓	✓	✓	✓
4.50 mm	✓	✓	✓	✓	✓	✓	✓	✓	✓

✓ Available sizes

